

A woman with long, dark, wavy hair, wearing a bright red blazer and large hoop earrings, is smiling and looking towards the camera. She is positioned in the foreground, slightly to the right of the center. Behind her is a modern, multi-story building with a glass facade and balconies, illuminated by warm lights. The sky is a mix of blue and orange, suggesting dusk or dawn. The ground is paved with a pattern of circular stones. Several cars are parked in the background near the building's entrance.

POOL SIDE

OUTDOOR BAR

CHILDREN'S PARK

GYM PANORAMIC

19 OFFICES AREAS

CONCIERGE SERVICES

SPACIOUS CAR PARKING

THE
Pinnacle
Live life elevated

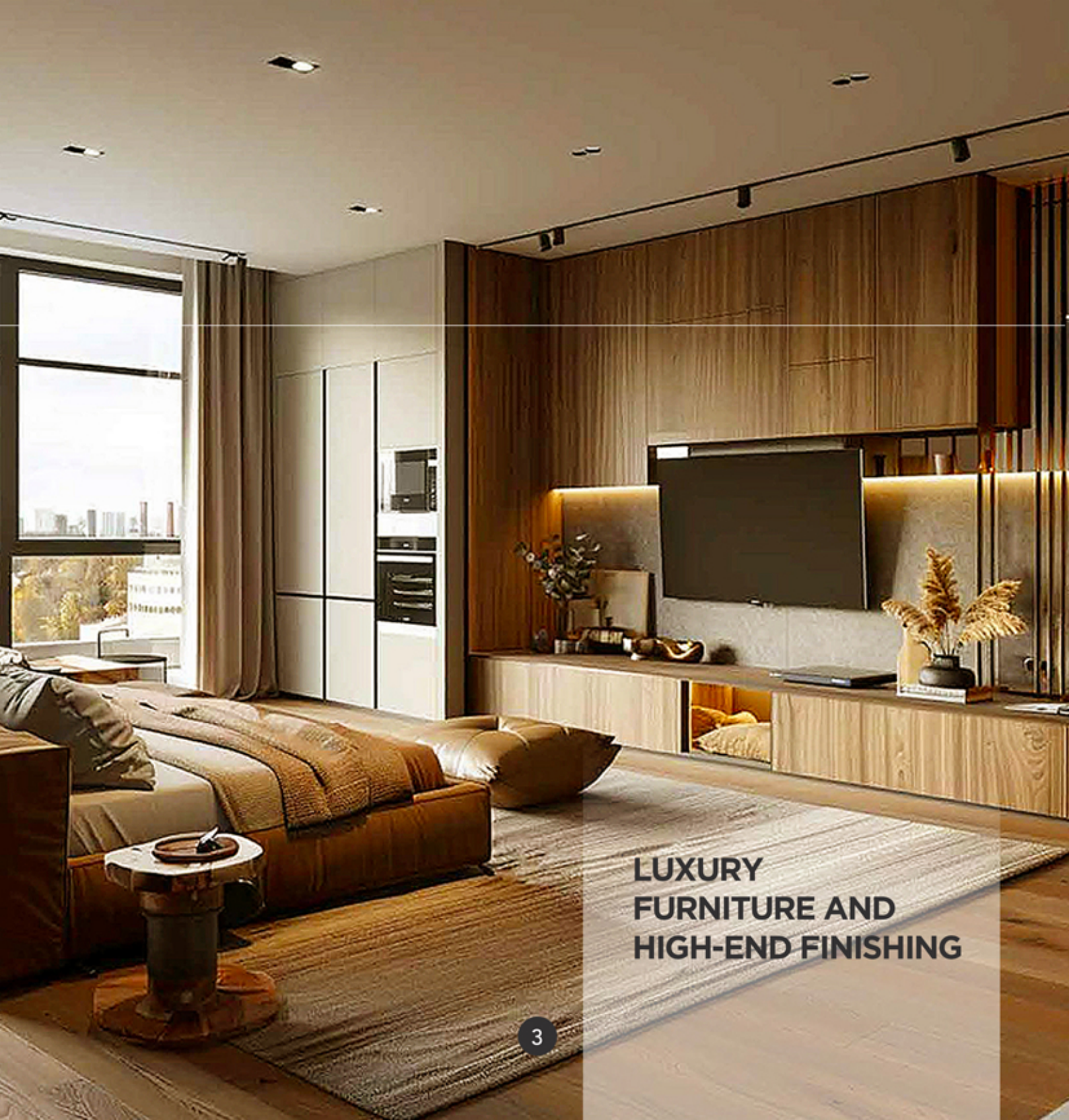


**DISCOVER A NEW LEVEL
OF LUXURY IN THE
MCDAN TOWER ONE.**

The best place to live in Accra,
East Legon

A modern, minimalist living and bedroom area. The room features a large window on the left side, offering a view of a cityscape. In the center, a wooden wall is accented with a flat-screen TV. To the right, a kitchen area is visible with white cabinetry and a countertop. The foreground shows a bed with a light-colored blanket and a round coffee table with a vase of dried flowers. The overall aesthetic is clean and sophisticated.

**LUXURY FURNITURE AND
HIGH-END FINISHING**

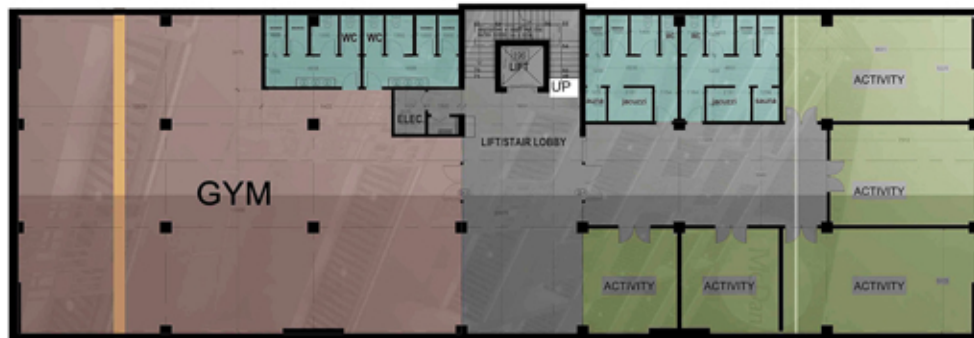


**LUXURY
FURNITURE AND
HIGH-END FINISHING**

BASEMENT

Gym, Spa, Massage Room,
Jacuzzi and Fitnes.

FLOOR
PLAN

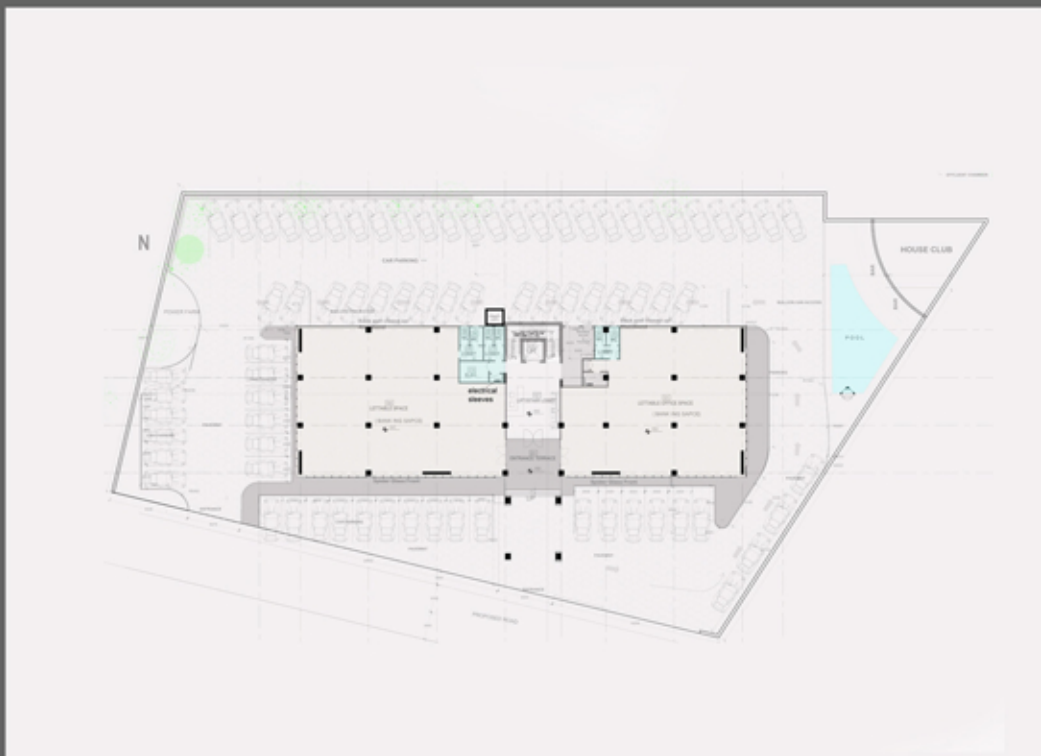


BANKING FLOOR

The ground floor is divided for 2 banking areas and luxury reception.

The landscape includes an outdoor bar, a park for children, a pool and a small gym panoramic, and a lot of car parking space.

GROUND FLOOR



FERTILITY CLINIC

FIRST FLOOR



ESSENTIAL SPACES	CLINIC SUPPORT SPACES	ADMINISTRATIVE SPACES	PATIENT SUPPORT SPACES
<ul style="list-style-type: none"> RECEPTION (2) WAITING AREA (2) CONSULTATION ROOMS (2) MINOR PROCEDURE ROOM (2) DEDICATED ULTRASOUND SCAN ROOM (2) MAMMOGRAMS STAFF AREA BREAK ROOMS/LOCKER ROOMS (2) 	<ul style="list-style-type: none"> MAMMOGRAM ROOMS (2) PHLEBOTOMY / SAMPLE TAKING ROOM (2) PHARMACY (2) GENERAL LABS (2) IV LAB (2) GENETIC TESTING LAB (2) OPEN NURSES STATION LABOUR ROOMS (2) PRIVATE WARD (2) IV THEATRE (2) MAIN THEATRE (2) DIRTY UTILITY ROOM (2) CLEAN UTILITY ROOM (2) 	<ul style="list-style-type: none"> RECORDS ROOM (2) IT ROOM (2) FINANCIAL AND GENERAL ADMIN ROOM (2) STORAGE ROOMS (2) JANITORIAL ROOM (2) 	<ul style="list-style-type: none"> HYGIENETTE (2) COUNSELLING ROOM (2) SPA & RELAXES (2)

OFFICES FLOOR

19 Office Area between
40 sqm and 60 sqm

**SECOND
FLOOR**



TYPICAL FLOOR

The typical floor includes 19 studios in different areas. Each studio has a living room, a master bedroom, kitchen and a dining area.



- Typical floor plan from 3rd to 7th floor
- There are 95 studios in total

TYPE A
60 sqm



10 UNITS

Master bed king size, luxury toilet and furniture, open kitchen, tv unit living area and balacony.



TYPE B
50 sqm



15 UNITS

Master bed king size, luxury toilet and furniture, open kitchen, tv unit living area and balcony.

TYPE C
55 sqm



15 UNITS

Master bed king size, luxury toilet and furniture, open kitchen, tv unit living area and balcony.



TYPE D
40 sqm



5 UNITS

Master bed king size, luxury toilet and furniture,
open kitchen, tv unit living area and balcony.



TYPE E
45 sqm



50 UNITS

Master bed king size, luxury toilet and furniture,
open kitchen, tv unit living area and balcony.

TWO BEDROOMS



8 UNITS

Master bed king size, luxury toilet and furniture,
open kitchen, tv unit living area and balcony.

PRIVATE OFFICE

900 sqm of private office, and staff offices separated by glass partition covered by Opaque electrical and magical film, possibility to see all the offices from the main office and close the view in the same at the same time.

The main Director can manage all the staff from his office



SKYBAR ROOF TOP

In the middle there's outdoor bar, stage for events in the centre and high pillars hunger lights and screens display on the other side of the roof top sitting area. The middle elevator and middle staircase and kitchens and toilets to service the skybar.

Panoramic View





- **LUXURY FACADE**
- **HIGH QUALITY MATERIALS**
- **GOOD FINISHING**

Big windows, high ceiling, and special entrance



**BIG AND NICE SHAPE OF PVC
WOODEN TEXTURE, SHOWING
THE LOGO OF MCDAN STRIPS
LIGHTS, AND NICE LIGHTING.**



Introducing The Pinnacle, the ultimate retreat for ambitious professionals like you! Our business-friendly apartments are designed to fuel your success, with:

- Sleek, modern spaces for focused work and relaxation
- High-speed internet and convenient work-from-home amenities
- Fully equipped fitness center to keep you energized
- Networking opportunities with like-minded neighbors
- Prime location near business hubs and amenities.

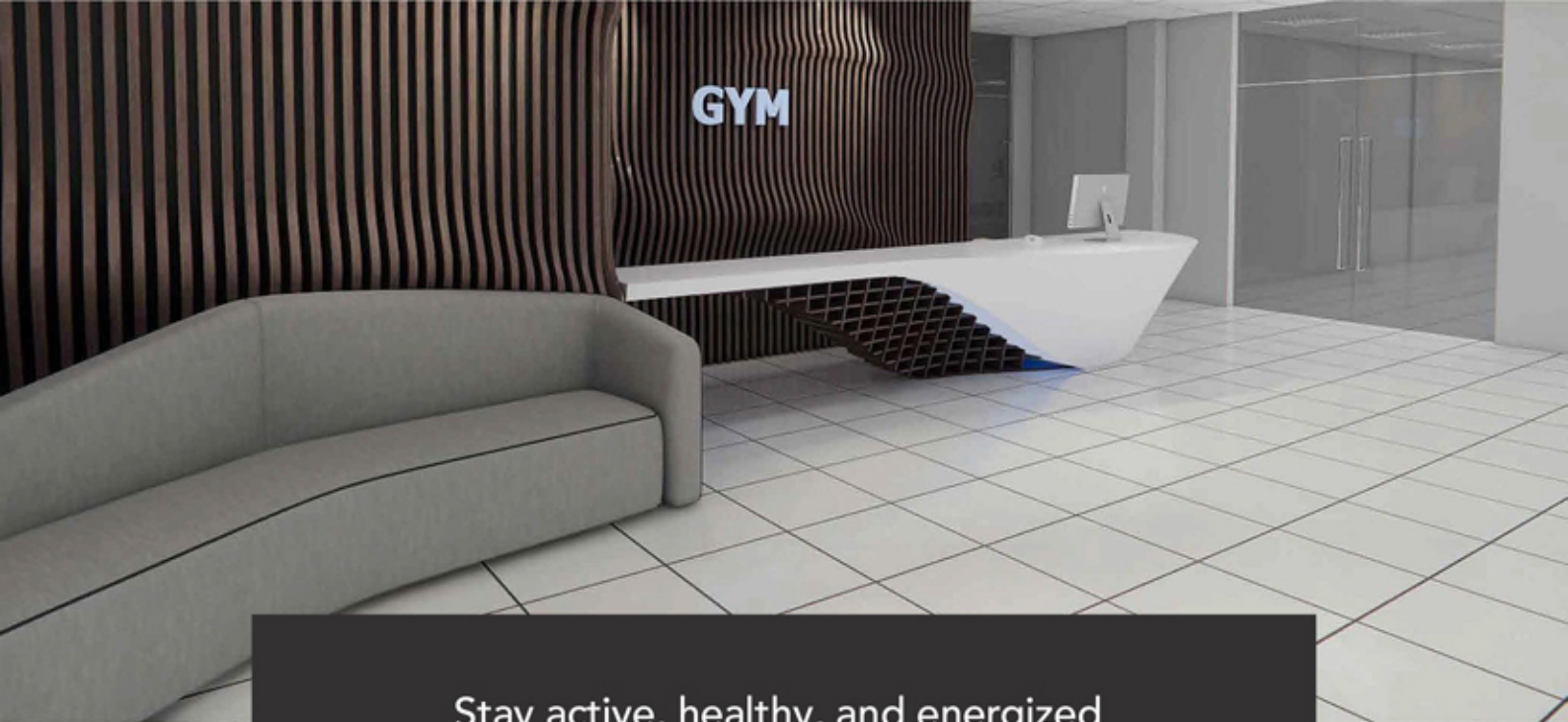


Nestle into a warm and welcoming community designed with families like yours in mind. Our spacious apartments and resort-style amenities are perfect for growing minds and adventurous spirits.

- Roomy residences with plenty of storage for strollers, toys, and treasures
- Fun-filled play areas, playgrounds, and splash pads for kids of all ages
- Convenient access to top-rated schools, parks, and family-friendly attractions
- Relaxing outdoor spaces for picnics, BBQs, and quality time together

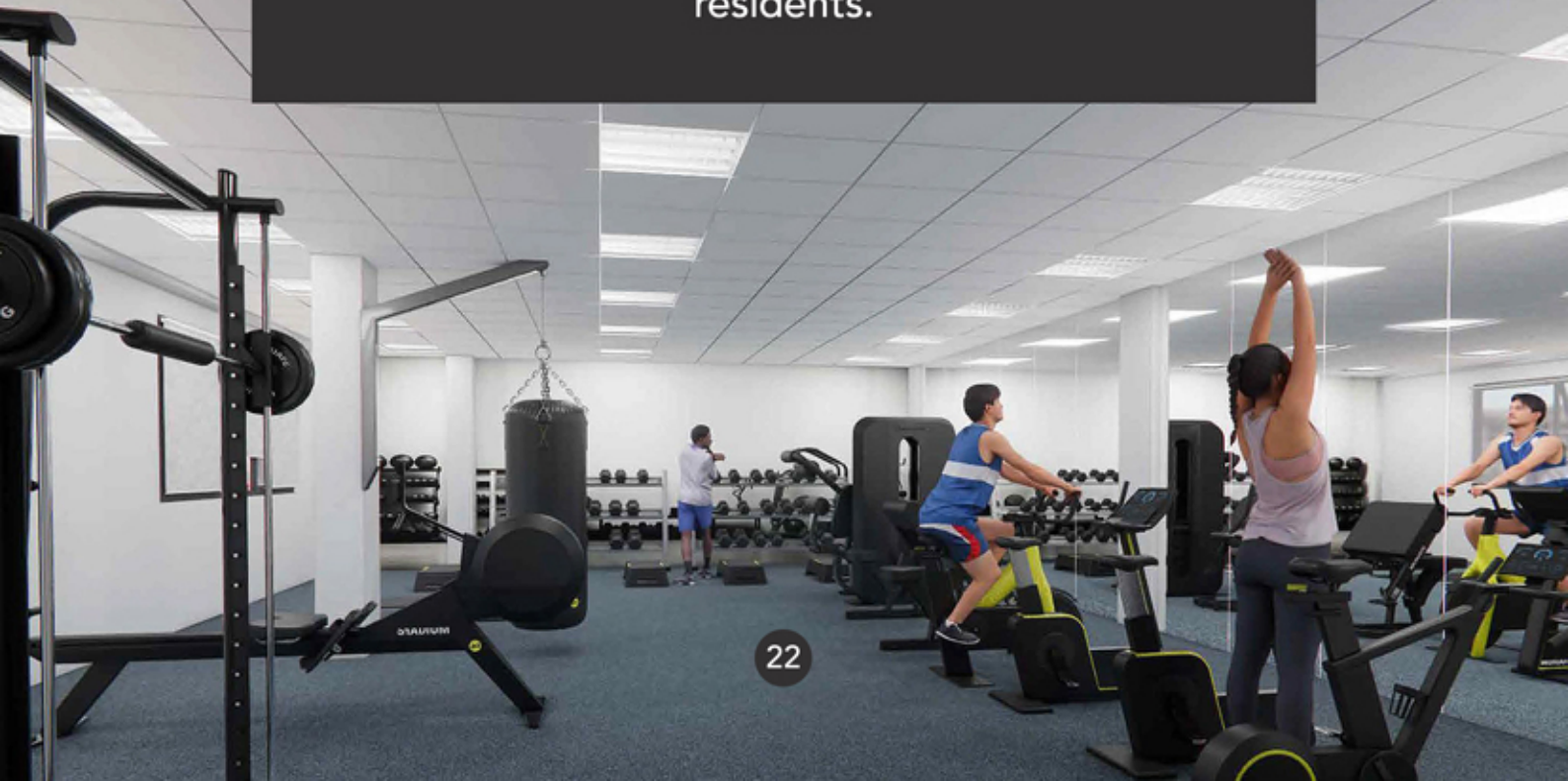
Elevate your social scene and make memories that last a lifetime. Come for the views, stay for the fun!



A modern gym reception area featuring a curved white desk with a computer monitor, a grey sofa, and a wall with vertical wooden slats. The floor is made of light-colored square tiles.

GYM

Stay active, healthy, and energized without ever leaving home! Our state-of-the-art gym is exclusively available to our residents.



A woman with braided hair is sitting on a wicker lounge chair with a white cushion, looking out over a swimming pool. The pool is surrounded by lush greenery and other lounge chairs. The scene is bright and sunny.

Dive into Relaxation

Escape to our stunning swimming pool, a tranquil oasis in the heart of our apartment community. Unwind and recharge in style, surrounded by comfortable loungers, lush greenery, and breathtaking views.



Looking for a place where your little ones can grow, play, and thrive? You've found it! Our apartment is designed with kids in mind, offering a safe, fun, and cozy space for the whole family to enjoy.



Priority View Homes Ltd
www.thepinnacle.com.gh
Email: contact@orgyebra.com.gh
Tel: +233 55 588 2294 / 020 218 5445
